



JEPPESEN[®]

Airport Moving Map Alert

!! URGENT !!

Date: 24 March 2026

Subject: London, United Kingdom
Gatwick (EGKK)
Cycle 2603

Frequency Areas and Intermediate TWY Holding Positions are missing.

Jeppesen Airport Moving Map and A816 formatted data for cycle 2603, effective 19 March 2026, contain incorrect data for Gatwick; London, United Kingdom (EGKK). UK AIP SUP 013/2026, effective 24 March 2026, introducing "London Gatwick Airport (EGKK) - introduction of dual Ground Operations and installation of new Intermediate Taxiway Holding Positions" is not reflected in cycle 2603 data as do not cover entire AIRAC cycle.

The following changes are valid from 00:01 [UTC] on 24 March 2026:

- Frequency Area: GMC (North): 121.540 is established
- Frequency Area: GMC (South): 121.805 is established
- Intermediate TWY Holding Position JACKA (on RWY 08L/26R, next to TWY R) is added
- Intermediate TWY Holding Position MARLO (on TWY J, between TWY R and TWY S) is added
- Intermediate TWY Holding Position N2 (on TWY N, between TWY K and TWY NA) is added
- Intermediate TWY Holding Position P2 (on TWY P, between TWY K and TWY NA) is added
- Intermediate TWY Holding Position Q2 (on TWY Q, between TWY J and TWY K) is added
- Intermediate TWY Holding Position R2 (on TWY R, between TWY J and TWY K) is added

WE STRONGLY URGE YOU TO MAKE THIS INFORMATION AVAILABLE TO APPROPRIATE CREW MEMBERS OR CUSTOMERS IMMEDIATELY!

Revised data will appear in Jeppesen Airport Moving Map and A816 formatted data for cycle 2604, effective 16 April 2026. Until then this Alert will be posted on the Jeppesen Web site: [Notices and Alerts](#). Please refer to the local NOTAMs and London, UK (EGKK) 20-8C, 20-8D temporary charts dated 20 MAR 26 for valid information.

If you have questions concerning this Airport Moving Map Alert, please contact Jeppesen Technical Support at:

Support Portal: digitalsuccess.jeppesen.com

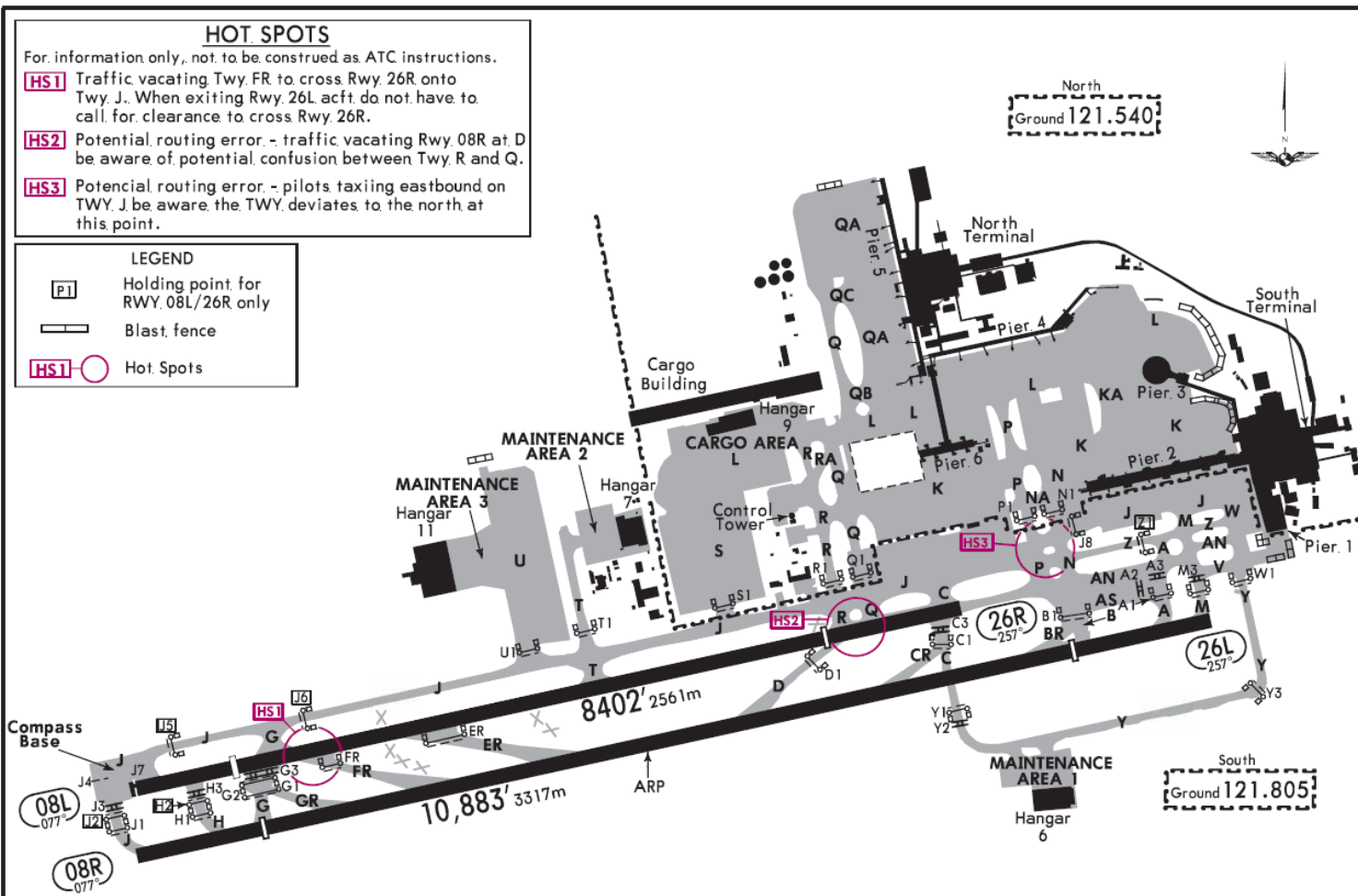
Airport Moving Map Alerts are published to advise users of significant issues in Jeppesen Airport Moving Map and A816 data which may affect aircraft ground operations. These Alerts are distributed to affected Airport Moving Map users. Different avionics equipment and computer systems use and display Airport Moving Map and data derived from A816 differently. End Airport Moving Map and A816 data users should consult with their Service Provider for definitive information on whether their system is affected by this Alert.

EGKK/LGW

20 MAR 26 (20-8C)
JEPPESSEN

LONDON, UK
GATWICK

INTRODUCTION OF DUAL GROUND OPERATIONS AND
INSTALLATION OF NEW INTERMEDIATE TAXIWAY HOLDING POSITIONS
(SUP 013/26)
REFER ALSO TO LATEST NOTAMS



If you have questions concerning this Airport Moving Map Alert, please contact Jeppesen Technical Support at:

Support Portal: digitalsuccess.jeppesen.com

Airport Moving Map Alerts are published to advise users of significant issues in Jeppesen Airport Moving Map and A816 data which may affect aircraft ground operations. These Alerts are distributed to affected Airport Moving Map users. Different avionics equipment and computer systems use and display Airport Moving Map and data derived from A816 differently. End Airport Moving Map and A816 data users should consult with their Service Provider for definitive information on whether their system is affected by this Alert.

INTRODUCTION OF DUAL GROUND OPERATIONS AND INSTALLATION OF NEW INTERMEDIATE TAXIWAY HOLDING POSITIONS (SUP 013/26)

REFER ALSO TO LATEST NOTAMS

INTRODUCTION:

Gatwick ATC is introducing a second Ground Movement Control (GMC) position. The two positions will be GMC (North) and GMC (South). To facilitate this new Intermediate Taxiway Holding Positions (ITHPs) will be introduced into the TWY system, with associated signage and pavement markings.

PROGRAMME:

This change will be permanent and effective from 0001 hours on 24 March 2026.

OPERATIONAL IMPLICATIONS:

Two GMC channels will be in operation as follows:

- GMC (North): 121.540.
- GMC (South): 121.805.

Departing aircraft should first contact ATIS (Gatwick Information) on 136.525 MHz. If the Delivery frequency is active, they should then call Delivery on channel 121.955.

Departing aircraft should contact the GMC frequency assigned to their stand, as shown in the table below. A map of the GMC jurisdictions is also provided for reference.

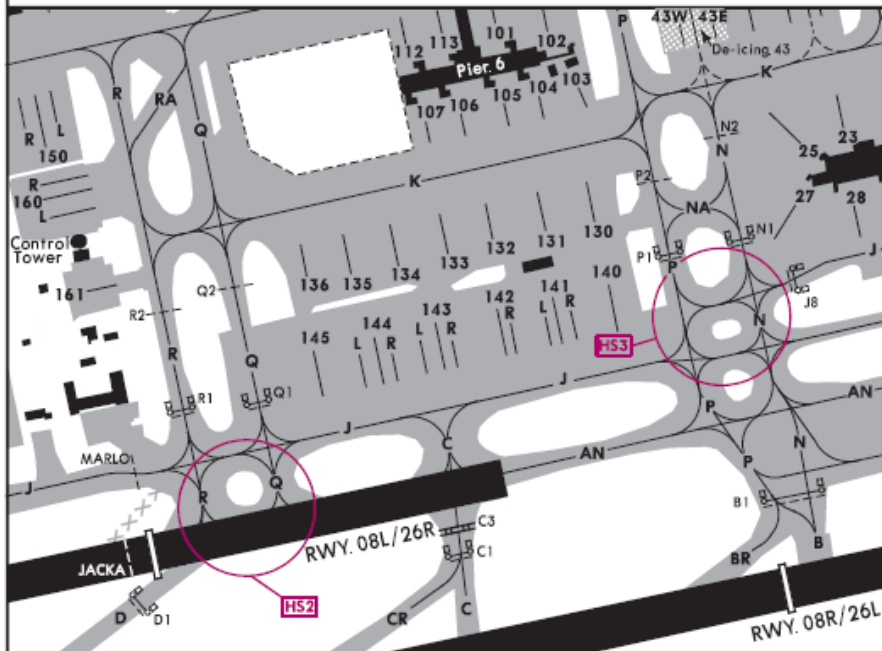
GMC North channel 121.540	
Pier 6	All Stands
Pier 5	All Stands
Pier 4	All Stands
Pier 3	All Stands
Pier 2 (Northside)	13, 15, 17, 19, 21, 23, 25
Remote Stands	41, to 43, 64, to 68, 130, to 136, 150, to 159, 160, and 161, 170, to 180.
GMC South channel 121.805	
Pier 2 (Southside)	10, 11, 12, 14, 16, 18, 20, 22, 24, 28, 27
Pier 1	All Stands
Remote Stands	140, to 145, 230, to 235

Note: these stands include L and R.

Six new ITHPs, namely R2, Q2, P2, N2, MARLO and JACKA will be introduced as shown in the chart extract below. Illuminated signboards and ground markings will be installed. Arriving aircraft may be held by ATC at these locations.

The holding positions namely U1, T1, S1, R1, Q1, P1, N1 and J8 have previously been used during Runway 08L/26R operations but will now be used H24 during Runway 08R/26L and 08L/26R operations.

Note: For a period of time after this change is effective, the signs at these locations will not be illuminated except during Runway 08L/26R operations.



CHANGES: New temporary chart.

© JEPPESEN, 2026. ALL RIGHTS RESERVED.

If you have questions concerning this Airport Moving Map Alert, please contact Jeppesen Technical Support at:

Support Portal: digitalsuccess.jeppesen.com

Airport Moving Map Alerts are published to advise users of significant issues in Jeppesen Airport Moving Map and A816 data which may affect aircraft ground operations. These Alerts are distributed to affected Airport Moving Map users. Different avionics equipment and computer systems use and display Airport Moving Map and data derived from A816 differently. End Airport Moving Map and A816 data users should consult with their Service Provider for definitive information on whether their system is affected by this Alert.