



JEPPESEN[®]

Airport Moving Map Alert

!! URGENT !!

Date: 14 April 2026

Subject: Turkmenbashi, Turkmenistan
Turkmenbashi (UTAK)
Cycle 2604

***Airport layout changed.
RWY 16L/34 status incorrect.***

Jeppesen Airport Moving Map and A816 formatted data for cycle 2604, effective 16 April 2026, contain incorrect data for Turkmenbashi; Turkmenbashi, Turkmenistan (UTAK). Turkmenistan AIRAC AMDT 04/26, effective 16 April 2026, could not be incorporated in time and contains changes to the airport layout.

The following changes are not reflected in cycle 2604 data:

- Parking Stands A1, A2 are added
- Parking Stands 9-12, 14-16 are added
- Parking Stand 13 is relocated next to new Parking Stand 12
- FATOs H1, H3, HVIP are added
- FATO H2 is relocated next to new FATO H1
- TWY F is removed
- RWY 16L/34R lighting systems are updated
- Control Tower, Terminal and Cargo building labels are added

Additionally, NOTAM O0035/26 ending on 23:59 [UTC] 16 April 2026, was not reverted, therefore the following change is not reflected in cycle 2604 data:

- RWY 16L/34R is open

WE STRONGLY URGE YOU TO MAKE THIS INFORMATION AVAILABLE TO APPROPRIATE CREW MEMBERS OR CUSTOMERS IMMEDIATELY!

Revised data will appear in Jeppesen Airport Moving Map and A816 formatted data for cycle 2605, effective 14 May 2026. Until then this Alert will be posted on the Jeppesen Web site: [Notices and Alerts](#). Please refer to the local NOTAMs and Turkmenbashi, Turkmenistan (UTAK) 10-9 chart dated 10 APR 26, effective 16 APR 26 for valid information.

If you have questions concerning this Airport Moving Map Alert, please contact Jeppesen Technical Support at:

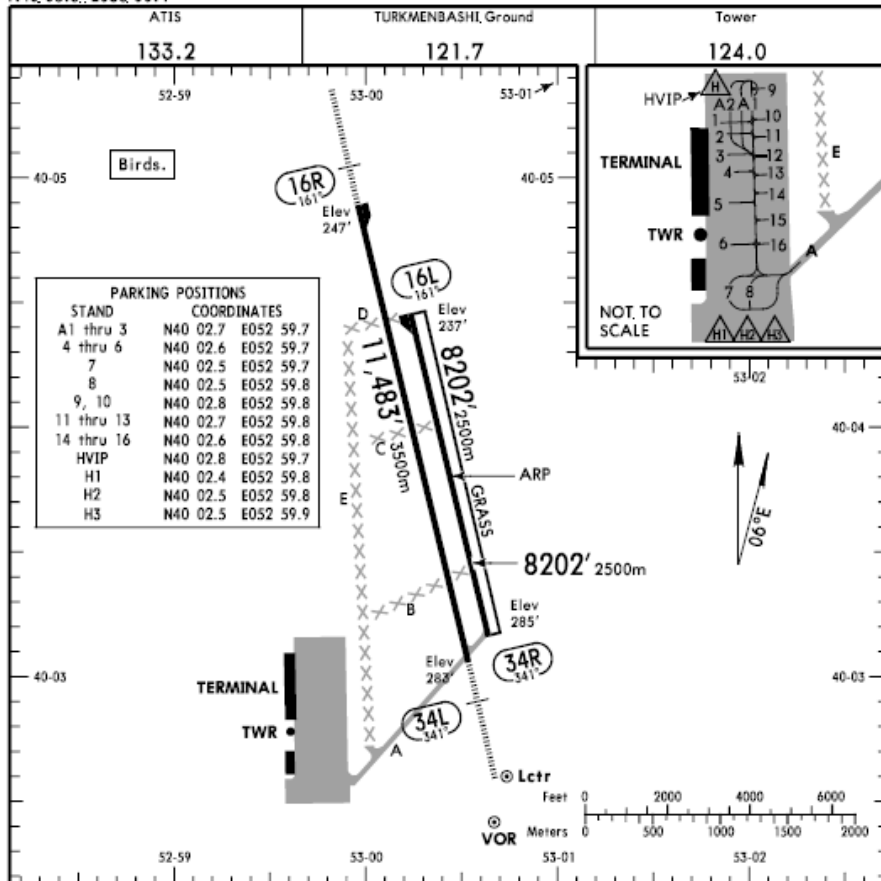
Support Portal: digitalsuccess.jeppesen.com

Airport Moving Map Alerts are published to advise users of significant issues in Jeppesen Airport Moving Map and A816 data which may affect aircraft ground operations. These Alerts are distributed to affected Airport Moving Map users. Different avionics equipment and computer systems use and display Airport Moving Map and data derived from A816 differently. End Airport Moving Map and A816 data users should consult with their Service Provider for definitive information on whether their system is affected by this Alert.

UTAK_2604

UTAK/KRW
Apt. Elev 285'
N40.03.8, E053.00.4

JEPPESSEN TURKMENBASHI, TURKMENISTAN
10 APR 26 10-9 Eff. 16 Apr
TURKMENBASHI



ADDITIONAL RUNWAY INFORMATION						
RWY					USABLE LENGTHS	
					Threshold	LANDING BEYOND
					Glide Slope	TAKE-OFF WIDTH
16L 34R						144' 44m
16R	RL(60m)	CL(30m)	PALS. CAT. I ①	PAPI-L ②	10,146' 3093m	148' 45m
34L	RL(60m)	CL(30m)	PALS. CAT. I ①	PAPI-L ③	10,572' 3222m	
16L 34R	Grass runway					262' 80m

① length, 900m
② (angle, 3.0°)
③ (angle, 3.5°)

State	TAKE-OFF					
	Rwy 16R/34L				Rwy 16L/34R	
	CL		RCLM		RCLM	
	DAY	NIGHT	DAY	NIGHT	DAY	NIGHT
A	R200m		R300m		R300m	NA
B			R300m	R400m		
C						
D						

① Available, when friction coefficient, is not less than 0.5, and crosswind component, does not exceed half of maximum allowed value for take-off for this ACFT type.

CHANGES: Airport layout, twys, stands, minimums.

© JEPPESSEN, 2002, 2026. ALL RIGHTS RESERVED.

If you have questions concerning this Airport Moving Map Alert, please contact Jeppesen Technical Support at:

Support Portal: digitalsuccess.jeppesen.com

Airport Moving Map Alerts are published to advise users of significant issues in Jeppesen Airport Moving Map and A816 data which may affect aircraft ground operations. These Alerts are distributed to affected Airport Moving Map users. Different avionics equipment and computer systems use and display Airport Moving Map and data derived from A816 differently. End Airport Moving Map and A816 data users should consult with their Service Provider for definitive information on whether their system is affected by this Alert.