



JEPPESEN[®]

Airport Moving Map Alert

!! URGENT !!

Date: 13 April 2026

Subject: Kathmandu, Nepal
Tribhuvan Intl (VNKT)
Cycle 2603 and 2604

Airport Layout incorrect.

Jeppesen Airport Moving Map and A816 formatted data for cycle 2603, effective 19 March 2026, and for cycle 2604, effective 16 April 2026, contain incorrect data for Tribhuvan Intl; Kathmandu, Nepal (VNKT). Nepal AIP SUP 05/26, effective 02 April 2026, could not be incorporated in time and contains changes to the airport layout.

The following changes (effective on 02 April 2026) are not reflected in cycle 2603 and 2604 data:

- Aprons D2, D3, GSE are added
- TWYs K, L, M, N, Q, R, S, T, U (under construction) are added
- TWY P (between TWY L and TWY F) under construction is added
- TWYs P (between TWY G and TWY S), S1, T1 are added and open
- TWY E is closed (until 30 April 2026)
- TWY F (between TWY D and TWY E) is closed (until 30 April 2026)
- TWY (between Domestic Apron and TWY F) is removed
- Construction Areas 'Hangar Area Development' are added
- Construction Area 'Future Remote Domestic Apron' is added
- Construction Area 'Expansion of Intl Apron & Parallel Taxiway' is added
- Parking Stands D8- D14 are removed
- Runway Turnpad 02 is reduced by 11 meters (until 15 June 2026)

WE STRONGLY URGE YOU TO MAKE THIS INFORMATION AVAILABLE TO APPROPRIATE CREW MEMBERS OR CUSTOMERS IMMEDIATELY!

Revised data will appear in Jeppesen Airport Moving Map and A816 formatted data for cycle 2605, effective 14 May 2026. Until then this Alert will be posted on the Jeppesen Web site: [Notices and Alerts](#). Please refer to the local NOTAMs and Kathmandu, Nepal (VNKT) 10-8B chart dated 03 APR 26 for valid information.

If you have questions concerning this Airport Moving Map Alert, please contact Jeppesen Technical Support at:

Support Portal: digitalsuccess.jeppesen.com

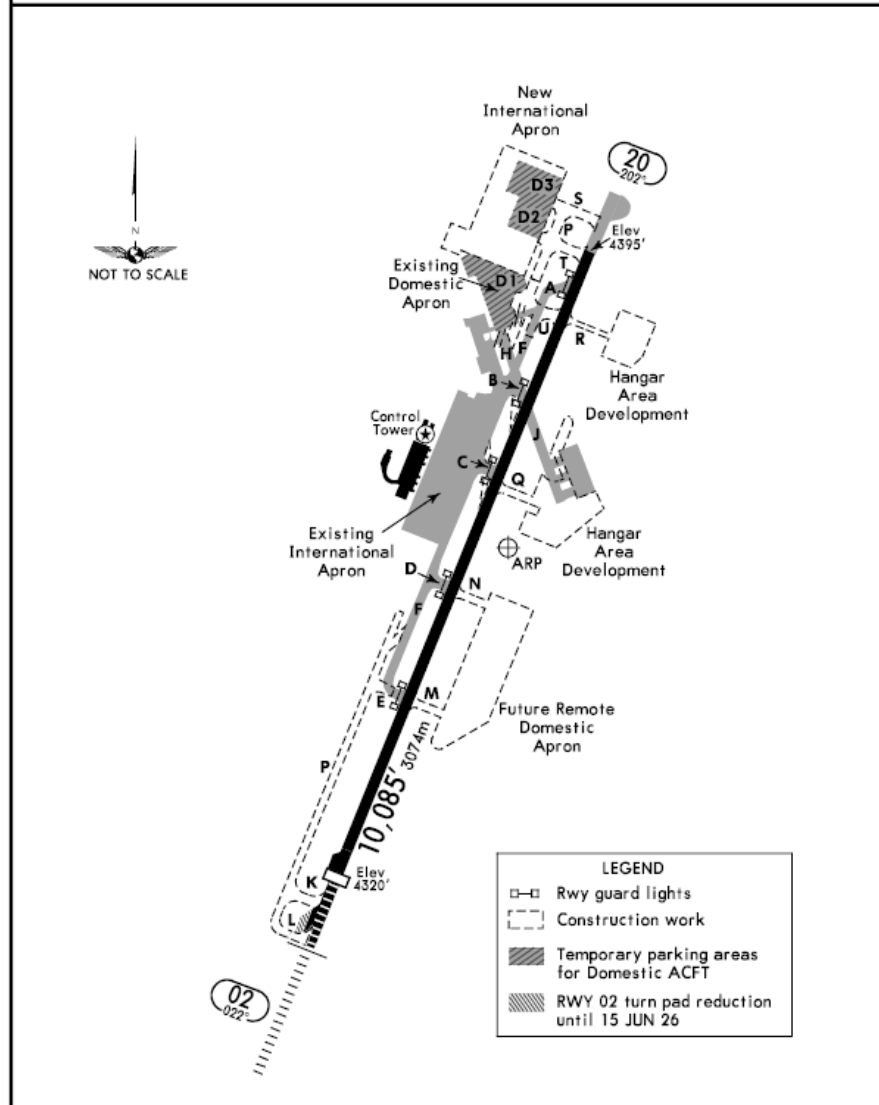
Airport Moving Map Alerts are published to advise users of significant issues in Jeppesen Airport Moving Map and A816 data which may affect aircraft ground operations. These Alerts are distributed to affected Airport Moving Map users. Different avionics equipment and computer systems use and display Airport Moving Map and data derived from A816 differently. End Airport Moving Map and A816 data users should consult with their Service Provider for definitive information on whether their system is affected by this Alert.

VNKT_2603_2604

CONSTRUCTION WORKS - ACFT PARKING
(SUP 04/26)

REFER ALSO TO LATEST NOTAMS

- Parking area for Domestic ACFT will be made available in the areas: D1 (in existing Domestic Apron), D2 and D3 (in New International Apron).
- The temporary ACFT parking in areas D2 and D3 will be demarcated and secured using water-filled barricades. All crews are advised to exercise caution while maneuvering in the areas D2 and D3 as apron marking will not be provided.
- Temporary lights will be provided in D2 and D3 areas for Night operation. All crews are advised to exercise caution while maneuvering in D2 and D3 since flood lighting high masts have been installed in the area.
- The reduction of the RWY 02 turn pad size by 36'/11m at the Southern end of RWY 02 will continue until 15 JUN 26 due to the construction of the new TWYs K and L. Minimum steering angle is limited to 40° and MAX taxiing speed is limited to 10 KT.



CHANGES: New temporary chart.

© JEPPESEN, 2026. ALL RIGHTS RESERVED.

If you have questions concerning this Airport Moving Map Alert, please contact Jeppesen Technical Support at:

Support Portal: digitalsuccess.jeppesen.com

Airport Moving Map Alerts are published to advise users of significant issues in Jeppesen Airport Moving Map and A816 data which may affect aircraft ground operations. These Alerts are distributed to affected Airport Moving Map users. Different avionics equipment and computer systems use and display Airport Moving Map and data derived from A816 differently. End Airport Moving Map and A816 data users should consult with their Service Provider for definitive information on whether their system is affected by this Alert.