



JEPPESEN[®]

Airport Moving Map Alert

!! URGENT !!

Date: 20 April 2026

Subject: Zagreb, Croatia
Franjo Tudjman (LDZA)
Cycle 2604 and 2605

RWY 04/22 configuration incorrect. TWYs A, B status incorrect.

Jeppesen Airport Moving Map and A816 formatted data for cycle 2604, effective 16 April 2026 and for cycle 2605, effective 14 May 2026 contain incorrect data for Franjo Tudjman; Zagreb, Croatia (LDZA). Croatia AIRAC AIP SUP 01/26, effective 16 April 2026, introducing "Temporary shortening of RWY 04/22 and closure of TWY A and TWY B due to concrete pavement rehabilitation work" has been activated by NOTAM A1099/26, effective 22 April 2026.

The following changes, effective from 21:30 [UTC] on 22 April 2026, are not reflected in 2604 and 2605 data as they do not cover entire AIRAC cycle and are valid until further notice (estimated end time beginning of June 2026):

- RWY 04 is displaced by 740 meters
- RWY 04/22 length is reduced to 2512 meters
- RWY 04/22 Declared Distances should read:
RWY 04: TORA 2512m TODA 2512m ASDA 2512m LDA 2512m
RWY 22: TORA 2512m TODA 2512m ASDA 2512m LDA 2512m
- RWY 04/22 Declared Distances for intersection take-off should read:
RWY 04: TWY C TORA 2162m TODA 2162m ASDA 2162m
RWY 22: TWY D TORA 1717m TODA 1717m ASDA 1717m
TWY E TORA 2176m TODA 2176m ASDA 2176m
- Construction Area on part of closed RWY 04/22 is added
- Construction Area on TWYs A and B is added
- TWYs A and B are closed
- Temporary Taxilane WG on GA Apron is established

If you have questions concerning this Airport Moving Map Alert, please contact Jeppesen Technical Support at:

Support Portal: digitalsuccess.jeppesen.com

Airport Moving Map Alerts are published to advise users of significant issues in Jeppesen Airport Moving Map and A816 data which may affect aircraft ground operations. These Alerts are distributed to affected Airport Moving Map users. Different avionics equipment and computer systems use and display Airport Moving Map and data derived from A816 differently. End Airport Moving Map and A816 data users should consult with their Service Provider for definitive information on whether their system is affected by this Alert.

**WE STRONGLY URGE YOU TO MAKE THIS INFORMATION AVAILABLE TO
APPROPRIATE CREW MEMBERS OR CUSTOMERS IMMEDIATELY!**

Revised data will appear in Jeppesen Airport Moving Map and A816 formatted data for cycle 2606, effective 11 June 2026. Until then this Alert will be posted on the Jeppesen Web site: [Notices and Alerts](#). Please refer to the local NOTAMs and Zagreb, Croatia (LDZA) 10-8, 10-8A temp charts dated 10 APR 26, effective 16 APR 26 for valid information.

If you have questions concerning this Airport Moving Map Alert, please contact Jeppesen Technical Support at:

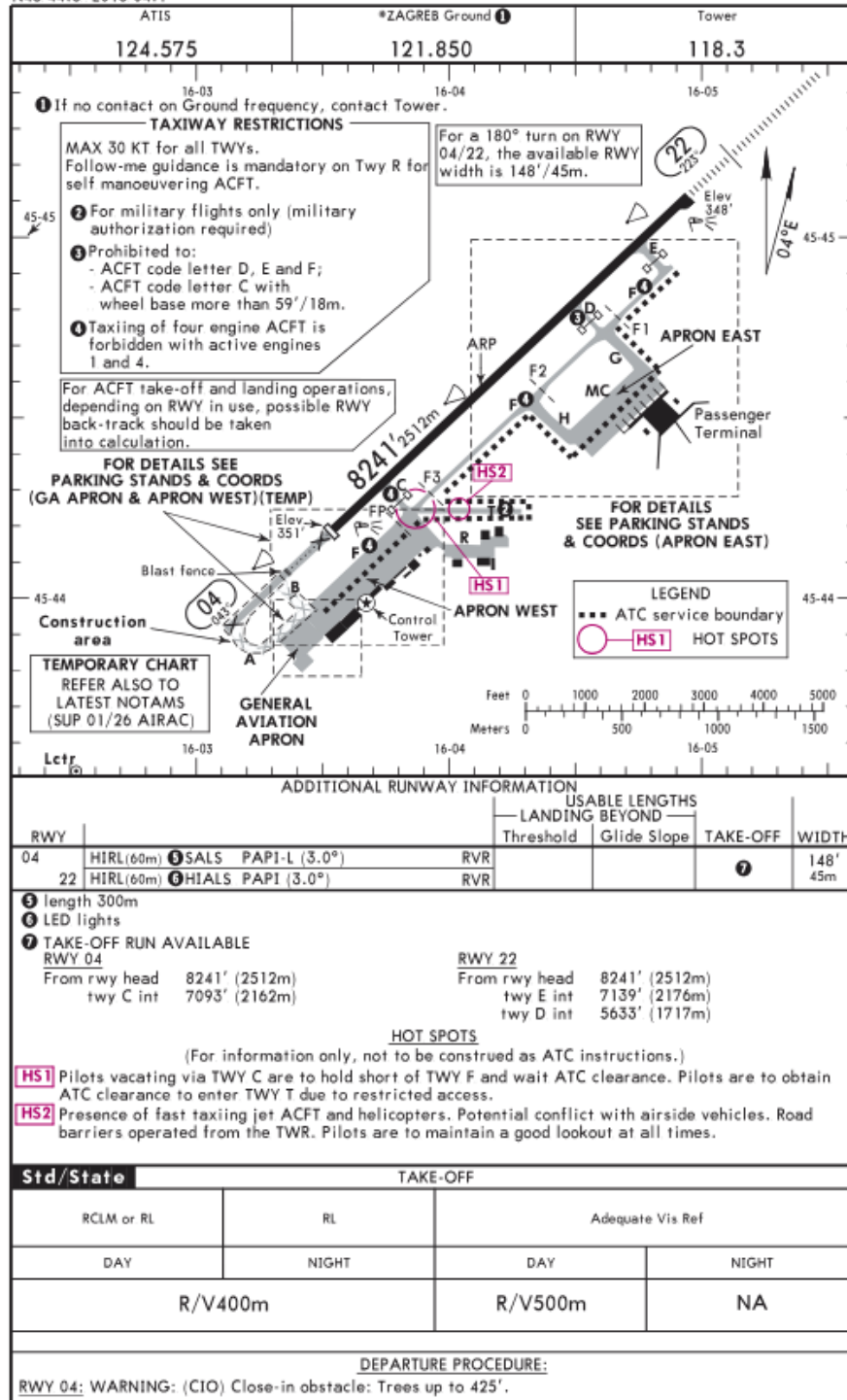
Support Portal: digitalsuccess.jeppesen.com

Airport Moving Map Alerts are published to advise users of significant issues in Jeppesen Airport Moving Map and A816 data which may affect aircraft ground operations. These Alerts are distributed to affected Airport Moving Map users. Different avionics equipment and computer systems use and display Airport Moving Map and data derived from A816 differently. End Airport Moving Map and A816 data users should consult with their Service Provider for definitive information on whether their system is affected by this Alert.

LDZA/ZAG
 Apt Elev 353'
 N45 44.6 E016 04.1

JEPPESEN
 10 APR 26 (10-8) Eff 16 Apr

ZAGREB, CROATIA
 FRANJO TUDJMAN



CHANGES: New temporary chart.

© JEPPESEN, 2026. ALL RIGHTS RESERVED.

If you have questions concerning this Airport Moving Map Alert, please contact Jeppesen Technical Support at:

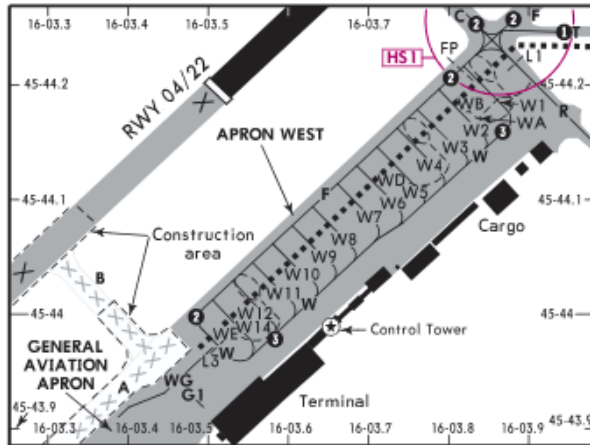
Support Portal: digitalsuccess.jeppesen.com

Airport Moving Map Alerts are published to advise users of significant issues in Jeppesen Airport Moving Map and A816 data which may affect aircraft ground operations. These Alerts are distributed to affected Airport Moving Map users. Different avionics equipment and computer systems use and display Airport Moving Map and data derived from A816 differently. End Airport Moving Map and A816 data users should consult with their Service Provider for definitive information on whether their system is affected by this Alert.

LDZA/ZAG

JEPPESEN
10 APR 26 10-8A Eff 16 Apr

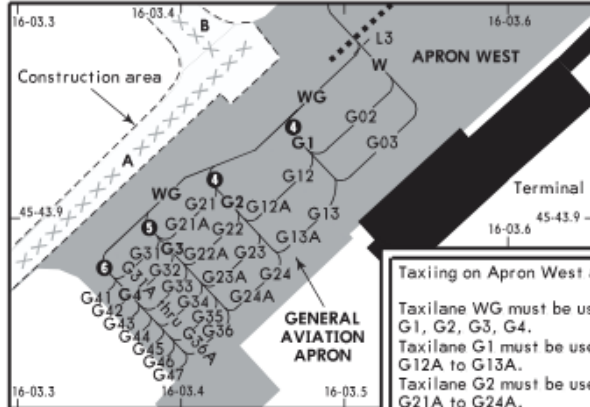
ZAGREB, CROATIA
FRANJO TUDJMAN



LEGEND
 - - - - - ATC service boundary
 ○ (pink) HST HOT SPOTS see 10-8 for description

TEMPORARY CHART
 REFER ALSO TO LATEST NOTAMS (SUP 01/26 AIRAC)

TAXIWAY RESTRICTIONS
 MAX 30 KT for all TWYs.
 Marshaller is mandatory at all parking positions on Apron West and General Aviation Apron.
 ACFT code letter F must await Follow-me when entering part of TWY F from TWY C to TWY B for taxiing to stands WB, WD and WE.



- 1 For military flights only (military authorization required)
- 2 Taxiing of four engine ACFT is forbidden with active engines 1 and 4
- 3 MAX wingspan of 118'/36m
- 4 MAX wingspan of 105'/32m
- 5 MAX wingspan of 79'/24m
- 6 MAX wingspan of 49'/15m

Taxiing on Apron West and General Aviation Apron:
 Taxilane WG must be used for entering/exiting taxilanes G1, G2, G3, G4.
 Taxilane G1 must be used for stands G02 to G03 and stands G12A to G13A.
 Taxilane G2 must be used for stands G12 to G13 and stands G21A to G24A.

Taxilane G3 must be used for stands G21 to G24 and stands G31A to G36A.
 Taxilane G4 must be used for stands G31 to G36, stands G41 to G47.
 Positions G21, G21A restricted to MAX wingspan of 66'/20m.
 Positions G02 to G03, G12 to G13, G12A to G13A, G21 to G24, G21A to G24A, G31 to G36, G31A to G36A are self-manoeuvring via designated taxilane.
 ACFT taxiing eastbound on TWY F can expect to be stopped by ATC at IHP FP.
 ACFT taxiing westbound on TWY F can expect to be stopped by ATC at IHP F3.
 ACFT exit from taxilane WG is allowed only when ACFT may continue on its way to Twy F and enter the Twy F without stopping at the intermediate holding position L3.
 Taxilane W must be used for ACFT exit from stands G02 to G03.
 In order to enter stand WA, ACFT must turn from Twy F to Twy R.

INS COORDINATES			
STAND No.	COORDINATES	STAND No.	COORDINATES
GENERAL AVIATION APRON		APRON WEST	
G02, G03	N45 43.9 E016 03.5	W1	N45 44.2 E016 03.9
G12 thru G13A	N45 43.9 E016 03.5	W2	N45 44.2 E016 03.8
G21 thru G23A	N45 43.9 E016 03.4	W3 thru W5	N45 44.1 E016 03.8
G24	N45 43.9 E016 03.5	W6 thru W8	N45 44.1 E016 03.7
G24A thru G35A	N45 43.9 E016 03.4	W9	N45 44.0 E016 03.7
G36, G36A	N45 43.8 E016 03.4	W10 thru W14	N45 44.0 E016 03.6
G41 thru G44	N45 43.9 E016 03.4	WA, WB	N45 44.2 E016 03.8
G45 thru G47	N45 43.8 E016 03.4	WD	N45 44.1 E016 03.7
		WE	N45 44.0 E016 03.5

CHANGES: New temporary chart. © JEPPESEN, 2026. ALL RIGHTS RESERVED.

If you have questions concerning this Airport Moving Map Alert, please contact Jeppesen Technical Support at:
Support Portal: digitalsuccess.jepesen.com

Airport Moving Map Alerts are published to advise users of significant issues in Jeppesen Airport Moving Map and A816 data which may affect aircraft ground operations. These Alerts are distributed to affected Airport Moving Map users. Different avionics equipment and computer systems use and display Airport Moving Map and data derived from A816 differently. End Airport Moving Map and A816 data users should consult with their Service Provider for definitive information on whether their system is affected by this Alert.