



JEPPESEN[®]

Airport Moving Map Alert

!! URGENT !!

Date: 11 June 2026

Subject: Oostende, Belgium
Oostende-Brugge (EBOS)
Cycle 2606

Apron 3 layout incorrect. TWYs aircraft restrictions incorrect.

Jeppesen Airport Moving Map and A816 formatted data for cycle 2606, effective 11 June 2026 contains incorrect data for Oostende-Brugge; Oostende, Belgium (EBOS). Belgium and Luxembourg AIP AMDT 006/2026 published 28 May 2026, effective 11 June 2026 was received after 2606 AIRAC cycle data processing due date.

As a result, the following changes are not reflected in cycle 2606 data:

- Parking Stands 1E-16W (on Apron 3) are removed
- Parking Stands 301-391 (on Apron 3) are added
- TWYs B1, B2, C1, G2, H2 aircraft restrictions are updated
- Hot Spot description is updated

WE STRONGLY URGE YOU TO MAKE THIS INFORMATION AVAILABLE TO APPROPRIATE CREW MEMBERS OR CUSTOMERS IMMEDIATELY!

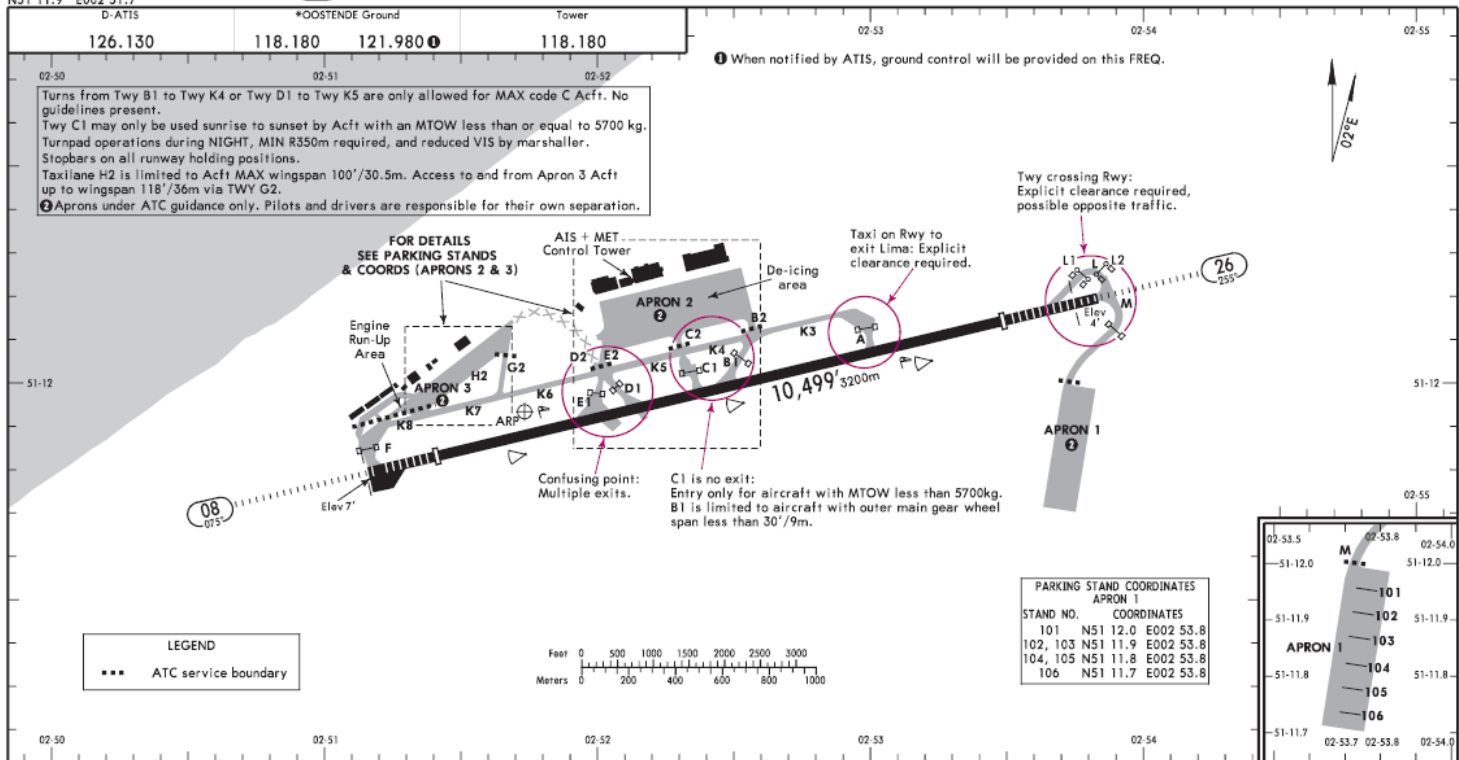
Revised data will appear in Jeppesen Airport Moving Map and A816 formatted data for cycle 2607, effective 09 July 2026. Until then this Alert will be posted on the Jeppesen Web site: [Notices and Alerts](#). Please refer to the local NOTAMs and attached Charts 10-9, 10-9A, 10-9B dated 19 JUN 26 for valid information.

If you have questions concerning this Airport Moving Map Alert, please contact Jeppesen Technical Support at:

Support Portal: digitalsuccess.jepesen.com

Airport Moving Map Alerts are published to advise users of significant issues in Jeppesen Airport Moving Map and A816 data which may affect aircraft ground operations. These Alerts are distributed to affected Airport Moving Map users. Different avionics equipment and computer systems use and display Airport Moving Map and data derived from A816 differently. End Airport Moving Map and A816 data users should consult with their Service Provider for definitive information on whether their system is affected by this Alert.

EBOS_2606



Std./State	TAKE-OFF			
Low Visibility Procedures required	Approval for Low Visibility Take-off required			
	RCLM & RL & CL (spacing 15m or less) & RVR	RCLM & RL & CL & RVR	RCLM & RL & RVR	RCLM & RVR & RL or CL
	DAY	NIGHT	DAY	NIGHT
R200m	R300m	R/V400m	R/V500m	NA

RWY	ADDITIONAL RUNWAY INFORMATION		USABLE LENGTHS		TAKE-OFF	WIDTH
	THRESHOLD	GLIDE SLOPE	LANDING BEYOND	GLIDE SLOPE		
08	①HIRL(30m) ②CL(15m) ③④HIALS ⑤TDZ	OFZ RVR	9515' 2900m	8507' 2593m	⑥	148' 45m
26	①HIRL(30m) ②CL(15m) ③④HIALS ⑤TDZ	OFZ RVR	9137' 2785m	8103' 2470m		

① LED lights
② length 870m
③ length 840m
④ Intersection take-off by ATC. Pilots unable to accept should advise ATC duly in advance.

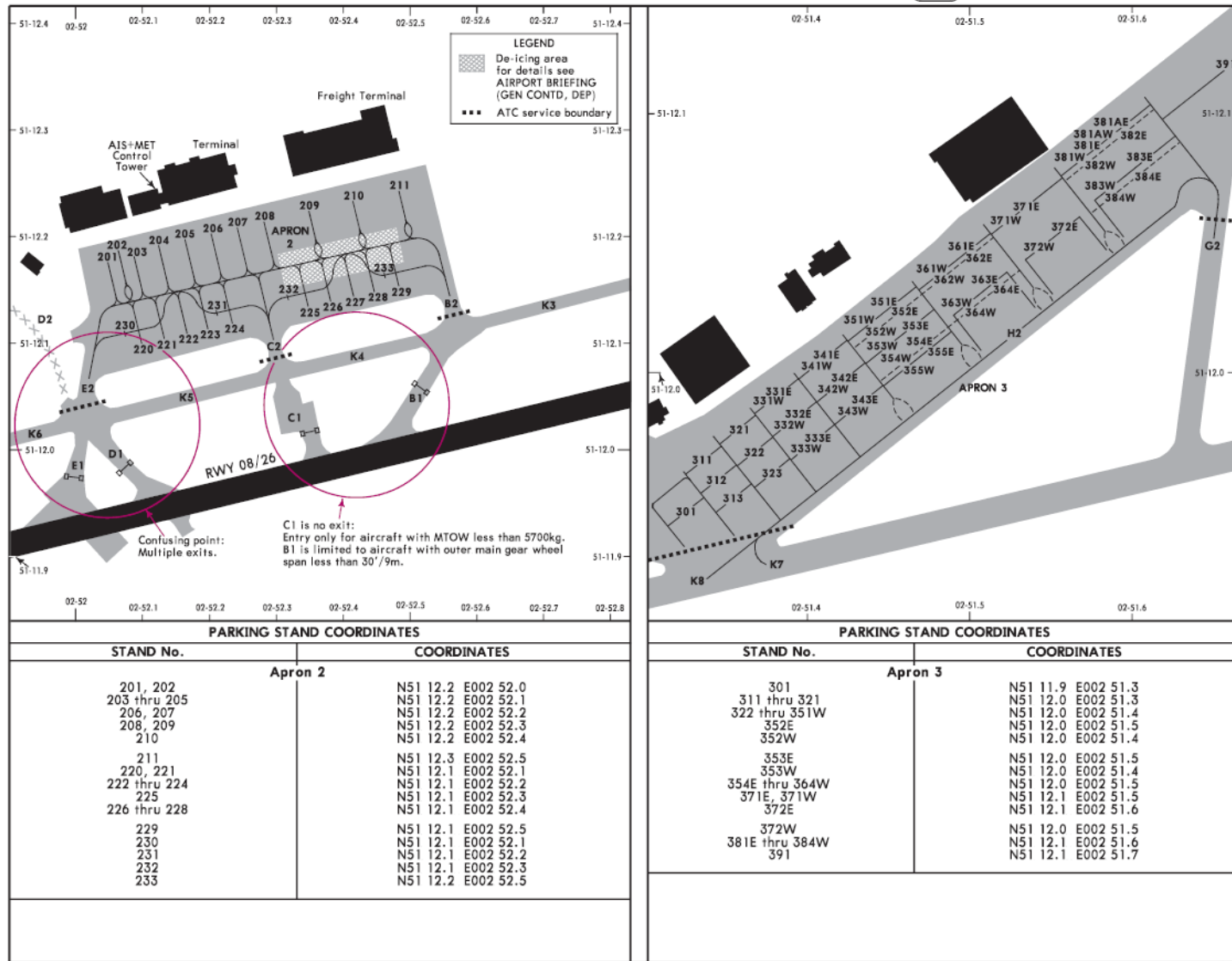
RWY 08:		RWY 26:	
From Rwy head	10,499' (3200m)	From Rwy head	10,499' (3200m)
Twy E1 int	7497' (2285m)	Twy A int	7146' (2178m)
Twy D1 int	6821' (2079m)	Twy B1 int	5282' (1610m)
Twy C1 int	5778' (1761m)	Twy C1 int	4718' (1438m)

CHANGES: Hot spot description, note.

© JEPPESEN, 1999, 2026. ALL RIGHTS RESERVED.

If you have questions concerning this Airport Moving Map Alert, please contact Jeppesen Technical Support at:
Support Portal: digitalsuccess.jepesen.com

Airport Moving Map Alerts are published to advise users of significant issues in Jeppesen Airport Moving Map and A816 data which may affect aircraft ground operations. These Alerts are distributed to affected Airport Moving Map users. Different avionics equipment and computer systems use and display Airport Moving Map and data derived from A816 differently. End Airport Moving Map and A816 data users should consult with their Service Provider for definitive information on whether their system is affected by this Alert.



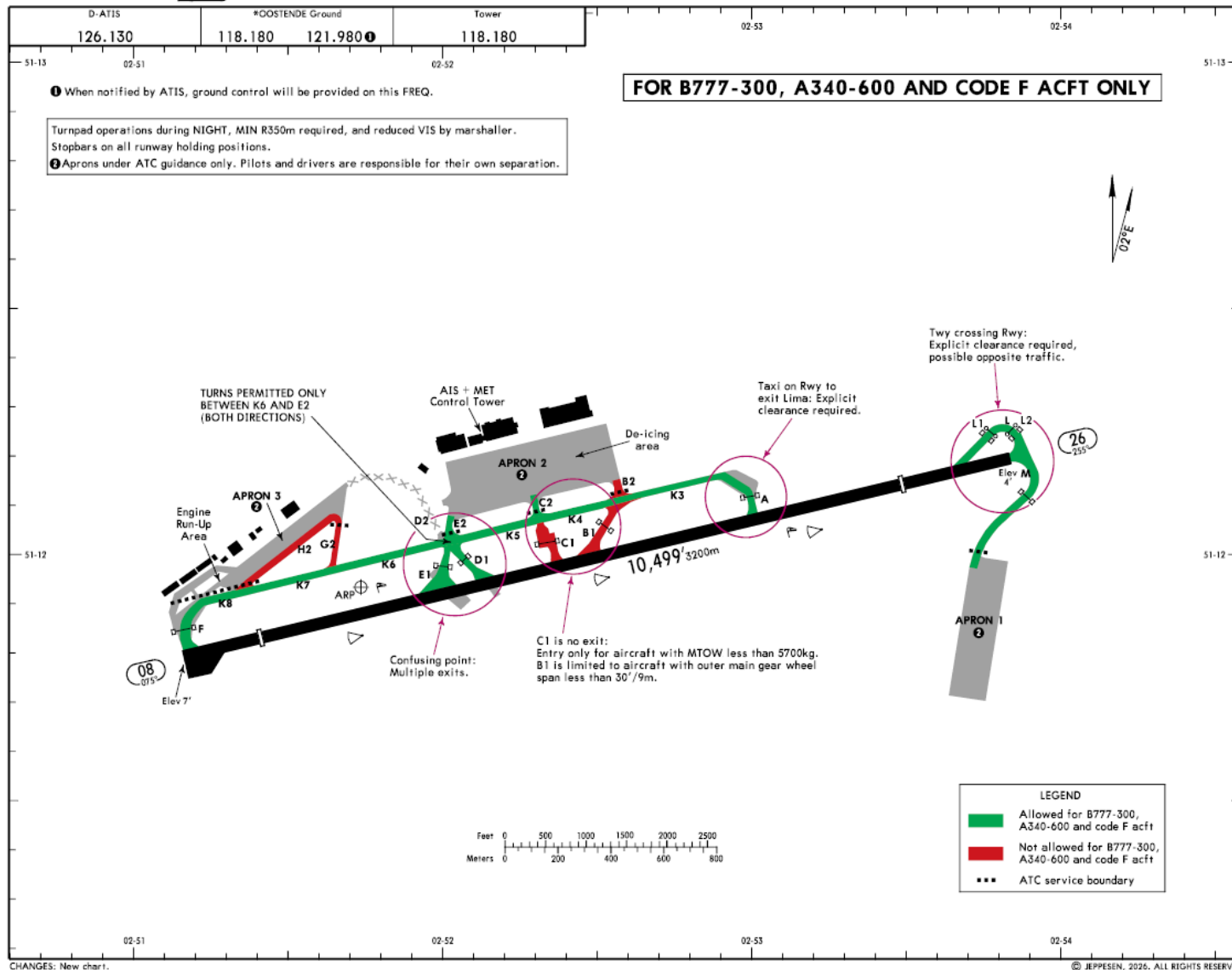
CHANGES: Apron 3 parking.

© JEPPESEN 2005, 2026. ALL RIGHTS RESERVED.

If you have questions concerning this Airport Moving Map Alert, please contact Jeppesen Technical Support at:

Support Portal: digitalsuccess.jeppesen.com

Airport Moving Map Alerts are published to advise users of significant issues in Jeppesen Airport Moving Map and A816 data which may affect aircraft ground operations. These Alerts are distributed to affected Airport Moving Map users. Different avionics equipment and computer systems use and display Airport Moving Map and data derived from A816 differently. End Airport Moving Map and A816 data users should consult with their Service Provider for definitive information on whether their system is affected by this Alert.



If you have questions concerning this Airport Moving Map Alert, please contact Jeppesen Technical Support at:

Support Portal: digitalsuccess.jepesen.com

Airport Moving Map Alerts are published to advise users of significant issues in Jeppesen Airport Moving Map and A816 data which may affect aircraft ground operations. These Alerts are distributed to affected Airport Moving Map users. Different avionics equipment and computer systems use and display Airport Moving Map and data derived from A816 differently. End Airport Moving Map and A816 data users should consult with their Service Provider for definitive information on whether their system is affected by this Alert.